





BEYOND

THE HORIZON

CHAIRMAN'S MESSAGE

**"A PROMISE EVEN IN A DREAM IS ALSO
A PROMISE. HENCE, IT MUST BE KEPT!"**

We take great pride in our successful legacy, spanned over the last 70 years, significantly spreading across industrial and commercial sectors, including textile, apparel, family entertainment, retail, energy, poultry farming and real estate. For long-term success, Din Industries prioritize on strong governance. It necessitates having the right people, products, efficient processes, partners and suppliers.

Din Group is a group of driven individuals founded a business which stands for nothing less than perfection. Our goal of worldwide expansion is to establish growth centers with a deliberate emphasis on delivering excellent customer service and experience with in our businesses.

SM MUNEER (LATE)
SITARA-E-IMTIAZ



OUR VISIONARY LEADERSHIP



S M TANVEER
Chairman - Din Industries



S M IRFAN
Director - Din Industries



S M IMRAN
Director - Din Industries

ENDURERS OF LEGACY



S M NABEEL
Director - Din Industries



S M UMAIR
Director - Din Industries



S M AMEER
Director - Din Industries

WHO WE ARE

Din Industries is a renowned group of companies established in early 1960's by Mr. Shaikh Muhammad Din, a significant figure of Pakistan's commerce industry. Din Industries primarily operates in Pakistan and also has a foot print abroad. We operate in leather, textile, wind power, banking, real estate, retail, construction & entertainment.

Over 5,000 people work for Din Industries collectively in Pakistan and Europe. Din Industries employs thousands of skilled individuals in highly specialized fields and generates enormous amounts of income and business opportunities for Pakistan. Din Industries generate a handsome yearly revenue of more than 42.2 Billion rupees. The management is highly professional, knowledgeable and experienced.

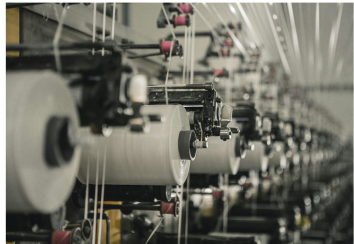


OUR PORTFOLIO

Din Industries is a blend of different group of companies which covers wide range from Retail, Real Estate, Production and Entertainment.



DIN TEXTILE



DIN SPINNING



DIN GARDENS CHINIOT



DIN ENERGY Ltd.



DIN GARDENS FAISALABAD



WE COMPANY



BTW



DIN EDUCATIONAL CENTER



DIN PROPERTIES
PRIVATE LIMITED

DIN PROPERTIES

Din Industries launched Din Properties with an objective of providing clients a high-quality and affordable life style housing experience. Din Properties has emerged as one of the leading and trust worthy brands in the real estate sector. Providing state of the art living experience along with an ideal investment and growth opportunities. Din Properties is committed to provide premium housing, innovative and sustainable solutions ensuring excellent customer experience.



Din Gardens Chiniot is a fully developed state-of-the-art housing society by Din Properties. A complete residential project providing all modern amenities in one place. It has evolved into an iconic destination for the entire city and its surroundings.

ARRAY OF EXCLUSIVE AMENITIES



DIN GARDENS CHINIOT



MOSQUE



COMMUNITY CLUB



COMMUNITY HOSPITAL



GATED COMMUNITY



SUI GAS SERVICE



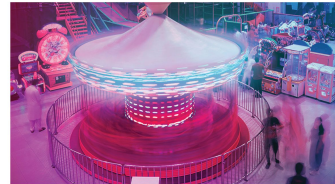
UNDERGROUND ELECTRICITY



SCHOOL



COMMERCIAL HUB



THEME PARK



ZOO

Din Gardens Chiniot provides commendable state-of-the-art amenities, enhancing the lifestyle experience.

A close-up portrait of a woman with her eyes closed, surrounded by lush green foliage. The lighting is soft and natural, highlighting her skin and the vibrant colors of the leaves. The text 'IMAGINE LIFE AT THE HEART OF NATURE' is overlaid on the left side of the image in a bold, white, sans-serif font.

**IMAGINE LIFE
AT THE HEART
OF NATURE**



DIN GARDENS FAISALABAD is a green living community located in the heart of the city, yet shielded from the usual upheaval of urban living. Din Gardens is an ecosystem unparalleled in its distinctiveness, as it presents a remarkable blend of nature, modernity and environmental sustainability, with Mega trees that light up solar energy and other sustainable solutions improving the quality of living.

DIN GARDENS FAISALABAD

Master Planned By Dar Al-Handasah

Dar Al-Handasah is a renowned international firm specializing in design, engineering, and architecture, established in 1956, with its Headoffice in Beirut, Lebanon. Widespread presence spanning across the Middle East, Africa, Asia, and Europe, they boast a diverse portfolio covering urban planning, infrastructure, transportation, commercial and residential buildings, among others. Their reputation stems from pioneering designs, sustainable practices, and unwavering dedication to excellence in architecture and engineering.



PROJECT CONCEPT

Welcome to Din Gardens Faisalabad, a revolutionary housing marvel that redefines urban living in harmony with nature. Envisioned as a 'City of Nature', our community is master-planned to seamlessly blend urban living with the beauty of the natural world. Energy-efficient homes powered by renewable sources are nestled among lush green spaces and organic gardens, providing a tranquil oasis in the heart of the city.

Our master plan prioritizes open spaces, with over 50% of the area dedicated to parks, gardens, and community areas, creating a unique urban ecosystem where residents can thrive.

Residents can enjoy a range of eco-friendly amenities, including jogging tracks, a Central Park, rainwater harvesting, and recycling facilities.

Our focus on community engagement and education empowers residents to make environmentally conscious choices and live a healthier, more sustainable lifestyle. Join us in shaping a better future for ourselves and future generations in this vibrant City of Nature





**A PERFECT BLEND OF
LUXURY & SERENITY**



FAISALABAD'S LARGEST CENTRAL PARK

In the midst of the bustling city, is the largest Central Park of Faisalabad, where time slows down and moments are cherished, where fun is clubbed with lush green vibrancy. This picturesque urban park has the most exciting elements from Supertrees, Lakes, Go Karting, Cafes and other fulfilling experiences to enjoy and seek serenity in unique ways.



EXPERIENCE GREEN LIVING IN FAISALABAD

This green community embraces the needs of each individual with open arms. The naturally cleaner and cooler air offers a healthy green living experience.

FAMILY'S SAFE HEAVEN

A premier housing community embodying the essence of serene living and preserving the environment. Din Gardens Faisalabad invites you to rediscover the beauty of nature



HARMONIOUS & TRANQUIL LIVING

The placement of each home has been carefully deemed to optimize panoramic views, providing residents with an unruffled ambiance from every window.



EXCELLENCE IN EDUCATION

Access to exceptional education for all residents. The infrastructure and curriculum is inspired by prestigious international academic institutions.



RECYCLED PLASTIC ROADS

We believe in building for the future. Our roads will be crafted from a revolutionary blend of recycled plastic and cutting-edge technologies.



CYCLING TRACK

Explore nature's beauty while enjoying cycling at Din Gardens Faisalabad. It's more than just a ride, it's an adventure.



SUSTAINABLE LIVING STANDARDS

Din Garden's Faisalabad stands out in the real estate sector as a model of responsible development thanks to its commitment to building a sustainable future

SUSTAINING A BETTER WORLD

We have planned to harvest the power of the sun for a brighter, sustainable tomorrow. Join us on the journey towards cleaner energy and a greener future.



YOUR HEALTH, OUR PRIORITY

A state-of-the-art medical facility for the residents and the encompassing communities. The hospital follows international standards.



STATE-OF-THE-ART COMMERCIAL HUB

An extensive array of shopping, dining, entertainment and amusement options for the residents and visitors. A complete Commercial Complex.



AMUSEMENT PARK

Our amusement park offers thrilling rides, captivating attractions, and endless entertainment.



GRAND MOSQUE

The mosque is designed to provide a peaceful and welcoming environment that can accommodate over 12,000 people to congregate.

ARRAY OF EXCLUSIVE AMENITIES

Din Gardens Faisalabad offers exceptional amenities, providing modern living and convenience for you and your family that make our community truly remarkable.



CENTRAL PARK



GATED COMMUNITY



WIDE ROADS



UNDERGROUND ELECTRICITY



PARKS



232FT WIDE MAIN BOULEVARD



CYCLING TRACK



SECURITY & SURVEILLANCE

AFFORDABLE INVESTMENT OPPORTUNITIES

RESIDENTIAL PLOTS

05 MARLA | 10 MARLA | 20 MARLA | 40 MARLA

HOUSES

05 MARLA | 10 MARLA



AFFORDABLE INVESTMENT OPPORTUNITIES

COMMERCIAL SHOPS

01 MARLA | 02 MARLA

COMMERCIAL PLOTS

4 MARLA | 8 MARLA | 10 MARLA | 20 MARLA



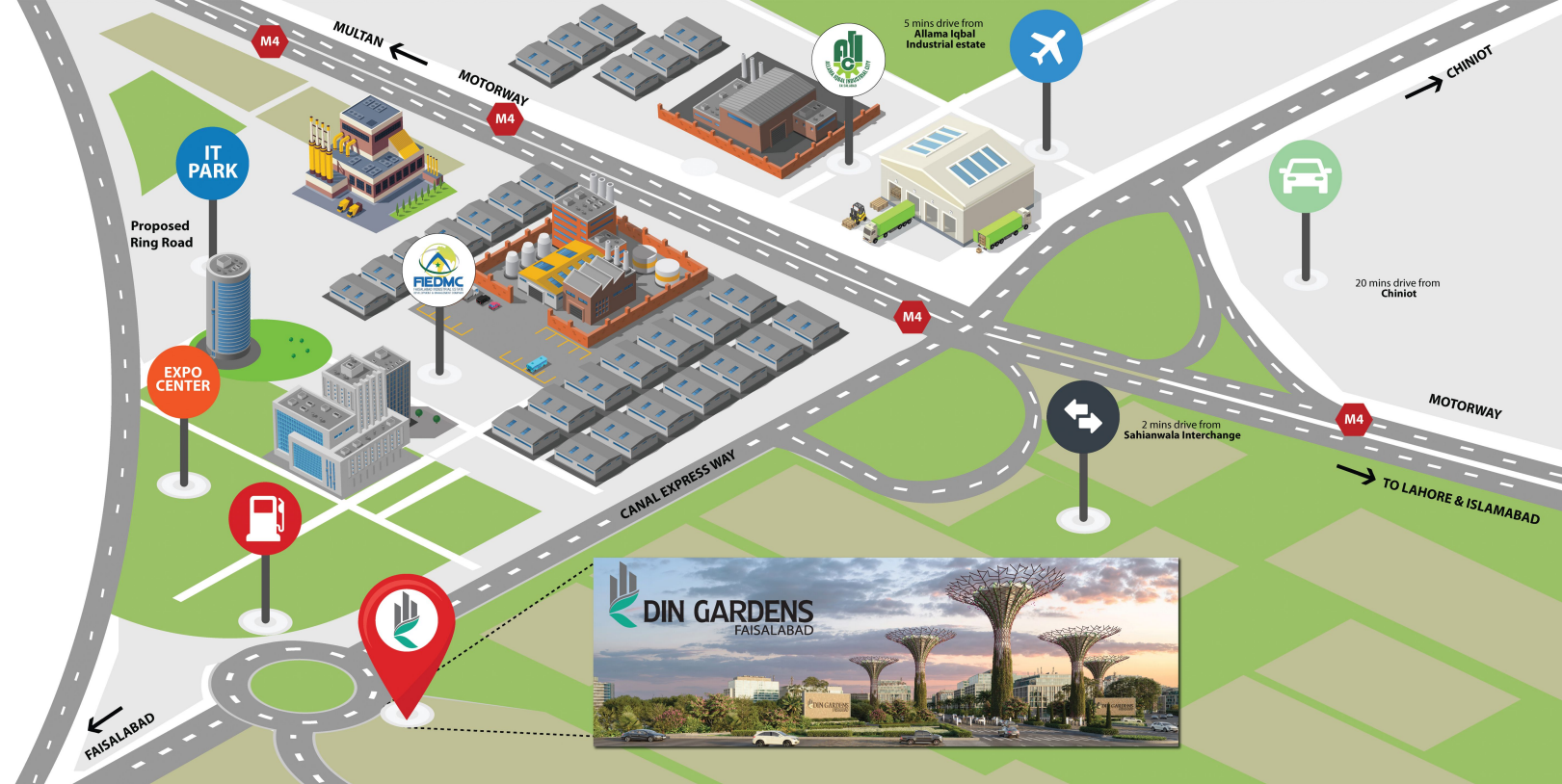
PERFECT LOCATION

Distance From Cities

- 10 min from Faisalabad City Center
- 15 min from Pindi Bhattian
- 20 min from Chiniot
- 30 min from Nankana Sahib
- 30 min from Gojra
- 45 min from Jhang
- 60 min from Sargodha
- 75 min from Lahore

Distance From Major Landmarks

- 2 min drive from proposed Expo Center
- 3 min drive from proposed Knowledge Park
- 3 min drive from proposed IT Park
- 5 min drive from proposed Ring Road
- 15 min drive from proposed New Faisalabad Airport





FIEDMC
(FAISALABAD INDUSTRIAL ESTATE DEVELOPMENT & MANAGEMENT COMPANY)

Potential of FIEDMC M-3 Industrial Estate

- Total Land: 4315 Acres.
- Employment Potential: More than 600,000 jobs
- Investment Potential: 817 Billion PKR.
- Industries Setup Potential: 557+.
- Custom duty exemption.
- Current Operational Industries in FEIDMC: Hyundai, National Foods, Hayat, Brighto, Daewoo, Unilever, Coca-Cola, Nishat Mills, Ghani Ceramics, Times Tiles, VIVO, Orient, Interlope, and many others.

DISCLAIMAR: The Images used in this brochure are for illustration purposes only. Any resemblance can be a mere co- incidence.



AIIC
ALLAMA IQBAL INDUSTRIAL CITY, FAISALABAD

Potential of Allama Iqbal Industrial Estate

- Prioritized Special Economic Zone
- Total Area: 3217 Acres
- Employment Potential: More than 400,000 jobs
- 10-year tax exemption
- Custom duty exemption
- Current Operational Industries in AIIC: 20+ Operational Chinese Companies CAT, Chenone, Nishat, HappiLac, Unilever, Coca-Cola, Daewoo, Brighto, and many others.

DISCLAIMAR: The Images used in this brochure are for illustration purposes only. Any resemblance can be a mere co- incidence.



ADDRESS




BTW

wecompany



WEBSITE

UAN: 042-111-111-346 (DIN)  www.dinproperties.com.pk